

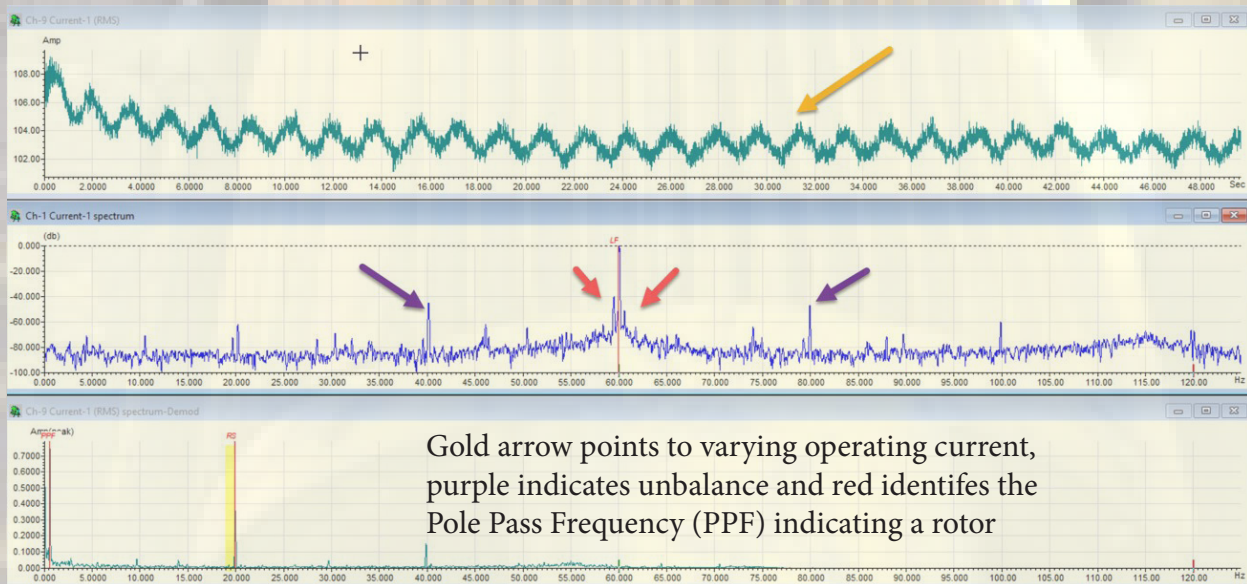
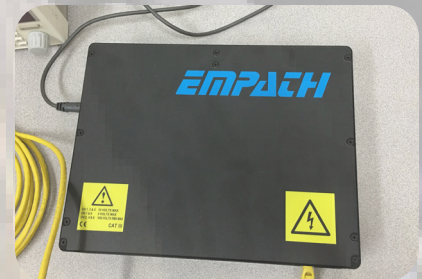
Wound Rotor Motor Case Study

EMPATH™



MotorDoc LLC
Doing what everyone else just talks about

Possible fault in a wound rotor motor used in an overhead crane. The motor is located in a dangerous area to access during normal operations. EMPATH data was easily obtained near the operator booth during normal operation.



The motor failed within a few days of testing and it was found that one slip ring of the three had failed.

An unbalanced rotor phase will appear similar to a bad rotor bar plus a magnetic unbalance that will appear at 1X RPM

www.motordoc.com

www.empathcms.com

MotorDoc LLC